

# Advanced Track: **Methods & Team Boards**



**Jeff Moffa**

President and CEO



**Jimmy Wroblewski**

Application Engineer

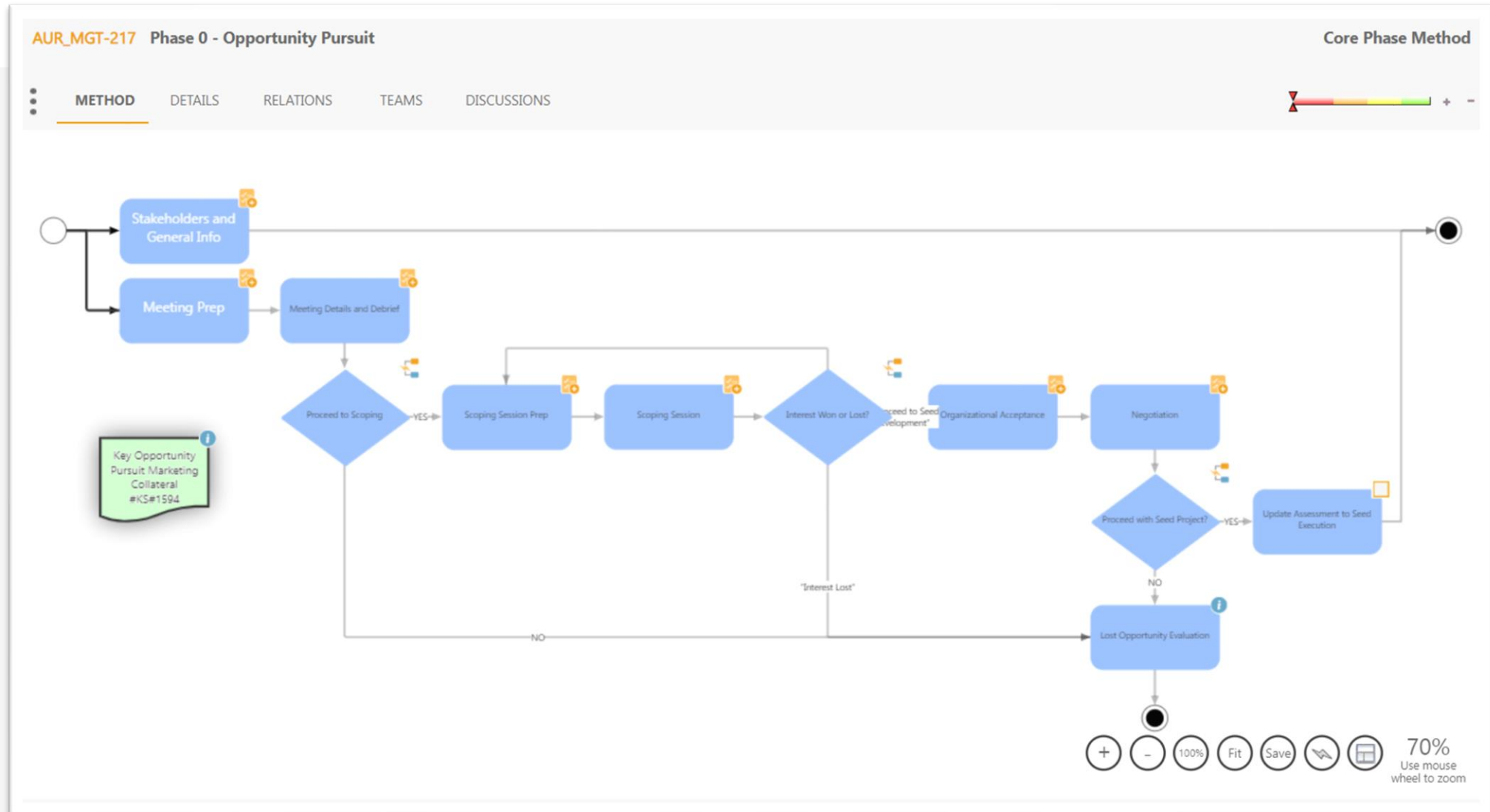


# Learning Points

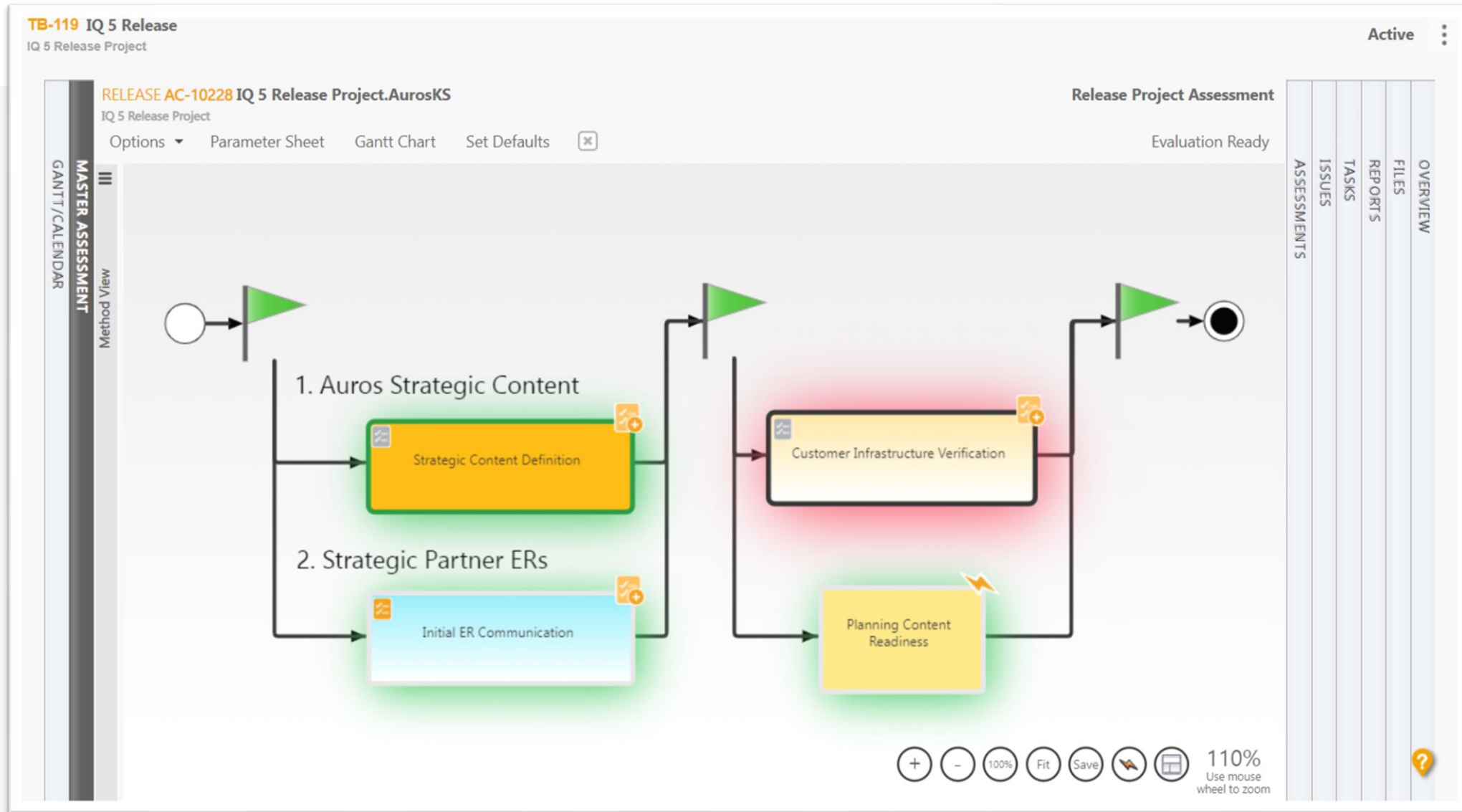
- **Methods Capture and Activate 'Process'**
- **Methods Can Contain Other Types of K-PACs**
- **Team Boards Organize the KA Process**
- **Methods Can Drive the Team Board**

# Polling Questions #1

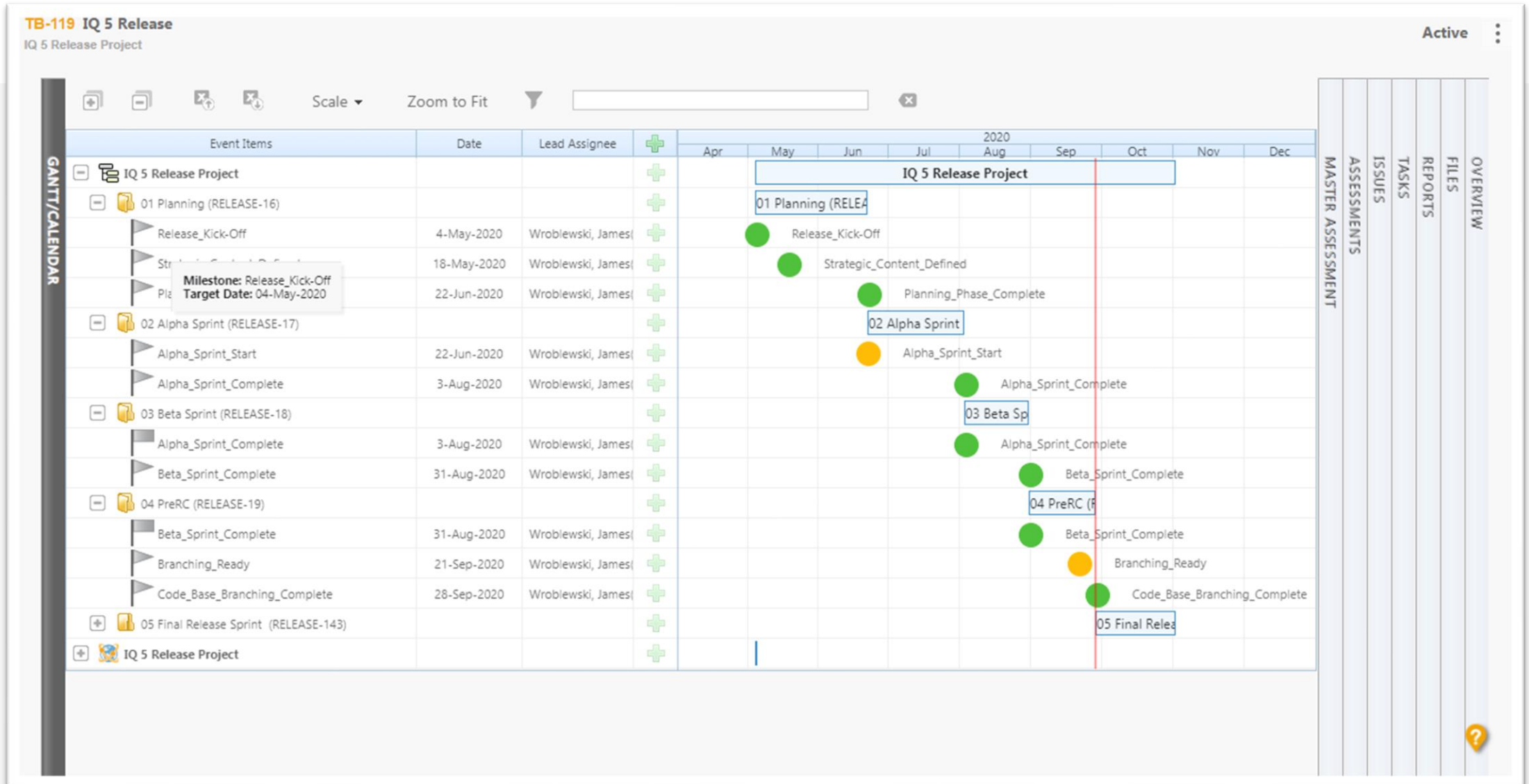
# Methods



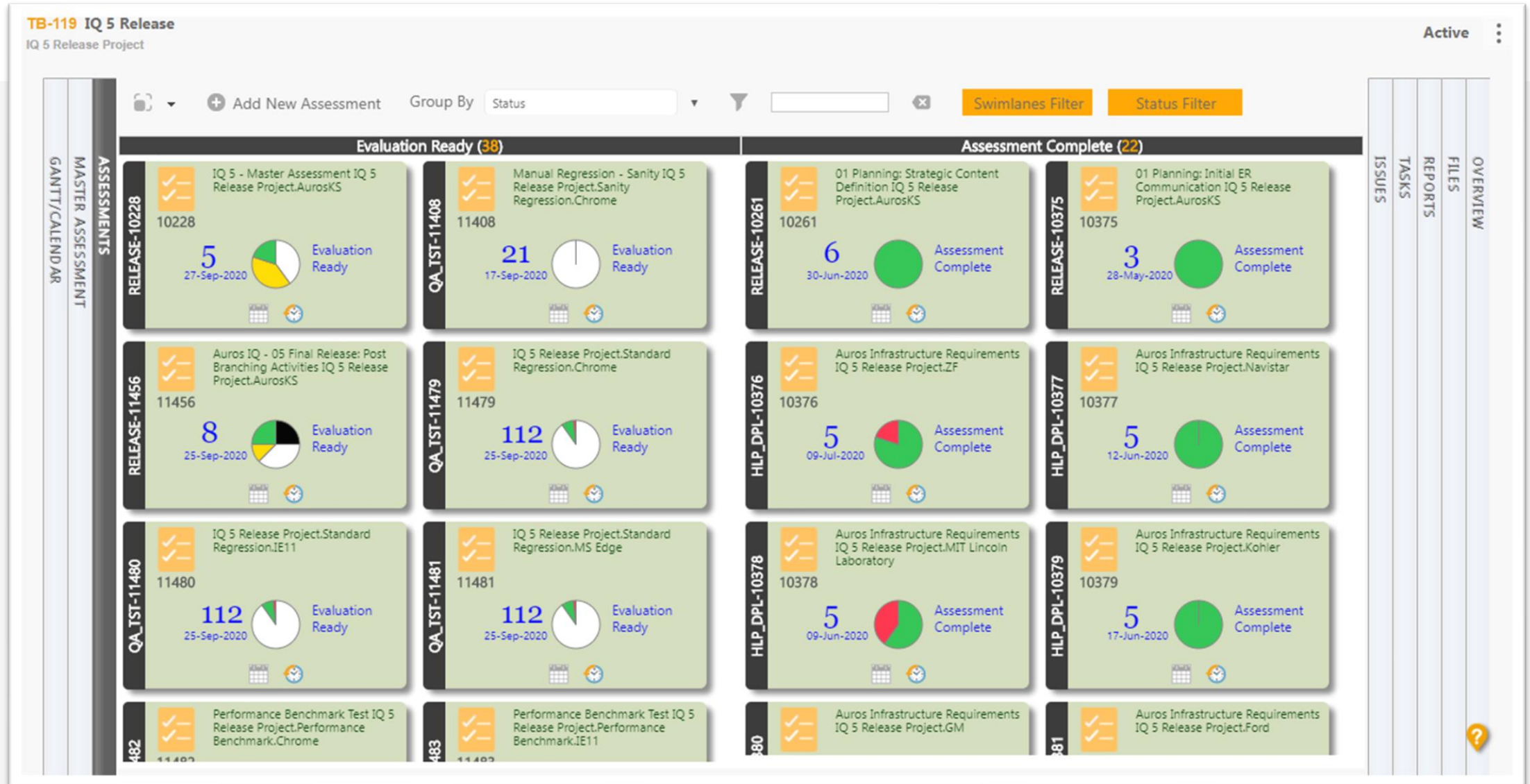
# Team Board Master Method



# Team Board Gantt



# Team Board AC Kanban





# Team Board Issues Kanban

TB-119 IQ 5 Release

IQ 5 Release Project

Active

ISSUES

ASSESSMENTS

MASTER ASSESSMENT

GANTT/CALENDAR

+

 Add New Issue

Group By

Status

Swimlanes Filter

Status Filter

Priority Filter

Open (2)

Audit Confirmation (40)

Closed (217)

29710

!

Create K-PAC via XLS When we creating/updating K-PACs via XLS (which contains more than one image in its multimedia) then K-PACs are not importing properly. Thus we displaying

29713

K-PAC Detail View >> Value Table Tab. In K-PAC Detail View Value Table Tab Local / Global Parameter is not showing when new parameter is added in edit K-PAC Value Table Editor and

28505

K-PAC Sets > Detail View When viewing a K-PAC Set in detail view the K-PAC Set "Type" attribute is not being displayed. +The "Type" attribute should be displayed in K-PAC Set Det

28909

CoP Admin > Basic CoP Admin > Team Administration Ampersands (&) in team names are allowing users to create multiple teams with the same name. This then attaches the teams to K-PAC

28918

KPI > AC LineItem Count KPI AC LineItem Counts are incorrect. It is counting LineItems that do not use the Conformance Palette of the KPI--video 1. In the video example KPI 1af

28969

!

K-PAC > Multimedia When users click on a K-PAC multimedia link from an Assessment Grid view, some K-PAC multimedia links will not load in Chrome. Description: Starter Browser

28973

K-PAC > Edit > Chapter Names > Special Characters Some special characters are causing issues in Chapter Names in K-PACs. 1. If an apostrophe (') is in the K-PAC Chapter name, it

Issue Management Config > Mgt Roles

27310

!

K-PAC RPE #IS#25627 In K-PAC VT When 'Evaluate' is selected for the first time the Value Reported and Status are not updating for some parameters whereas when selected for the ca

27401

!

Proximity Search Grid in Issue and K-PAC windows. IE11 Specific. Proximity Search grid showing blank in Issue Edit/Detail View and K-PAC Edit/Detail view. The grid is not loadin

28013

!

Continuation Issue to #IS#27169... Following are the different test cases not working in the scope of K-PAC Pushed-Out notifications. 1) When we are pushing same K-PAC to another

28199

AC Complete Bar The AC Complete Bar is showing 100% complete when there is one non-complete LineItem (NE is not complete in this case)--screenshot 1. + Complete bar should only c

28431

Logs files from BorgWarner's Production environment are too large to open. New files are typically generated when the log reaches a certain size but this has not occurred in months

28618

Assessment > Export with Links > Issues column When DUAL URL is used, if a user exports an AC with links, the links in the issues column are incorrect - see Screenshot 1. The

Evaluators are able to score and enter

26051

26586

26736

26738

28248

28726

OVERVIEW

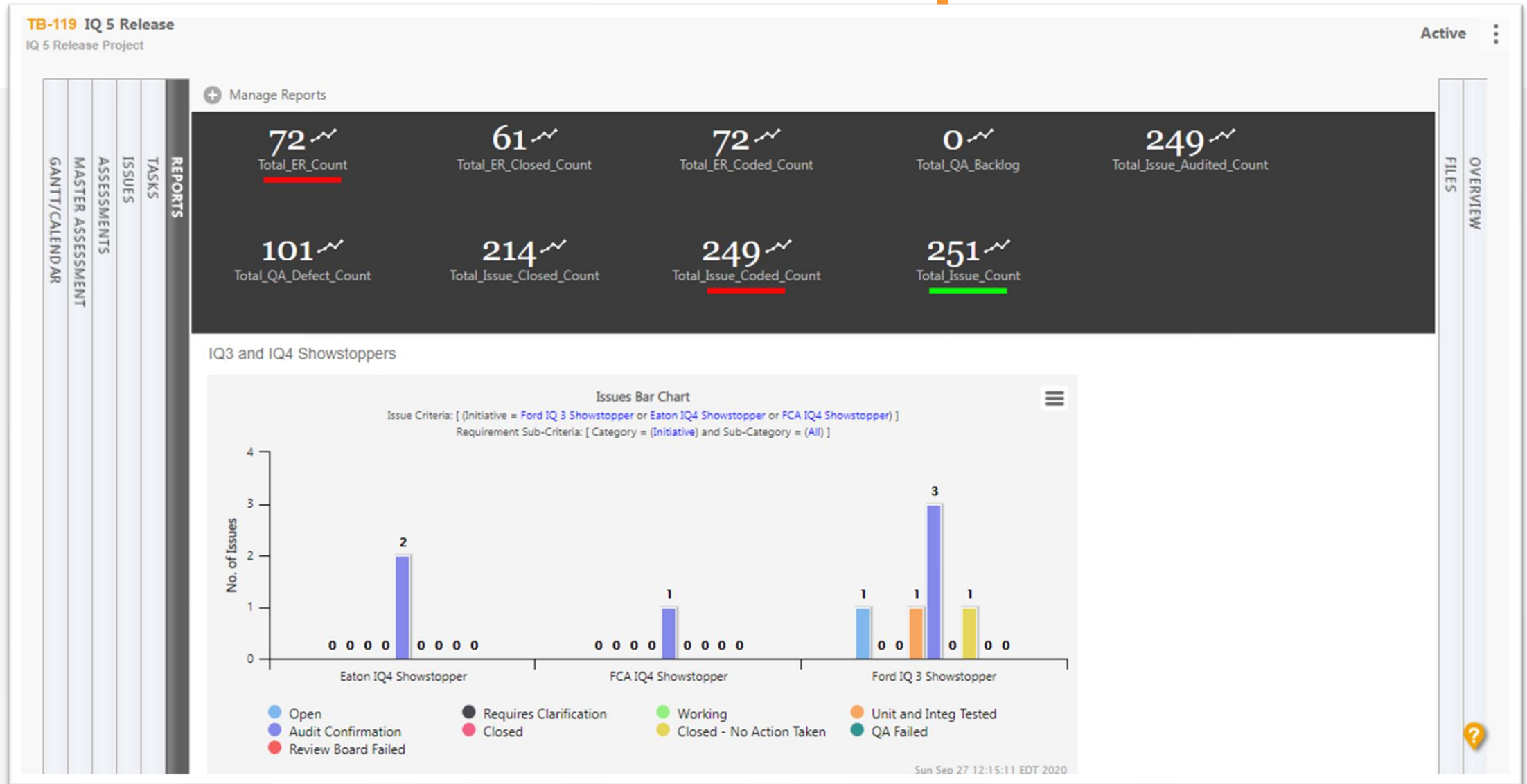
FILES

REPORTS

TASKS



# Team Board Reports



# Demonstrations

# Polling Questions #2

auris

